

The time has come to re-tool the 200 series & whilst being re-tooled we have taken the opportunity to add some new & improved features:

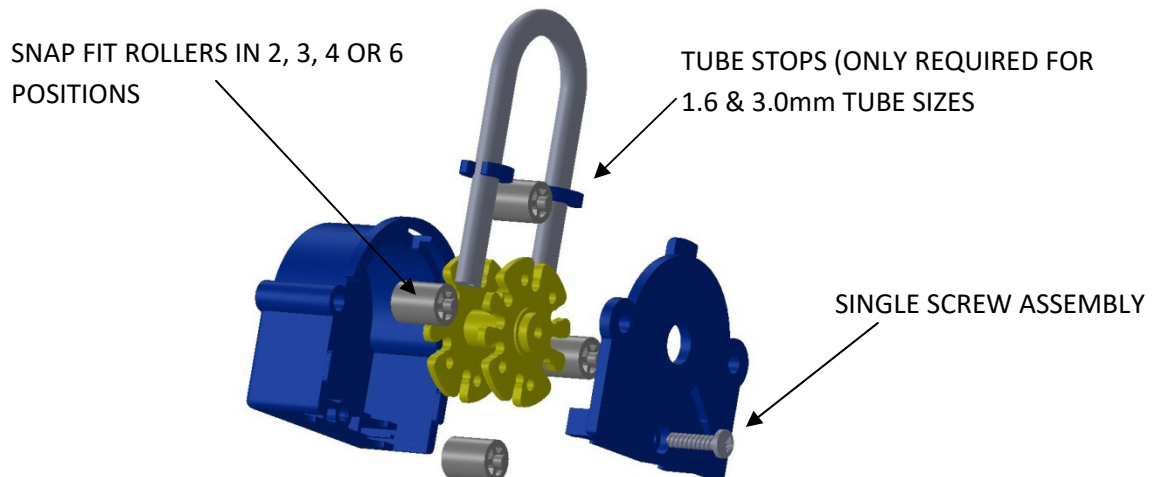
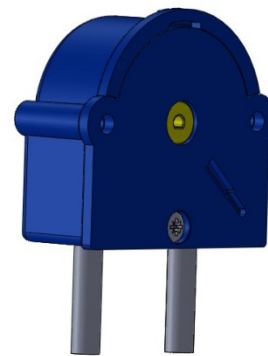
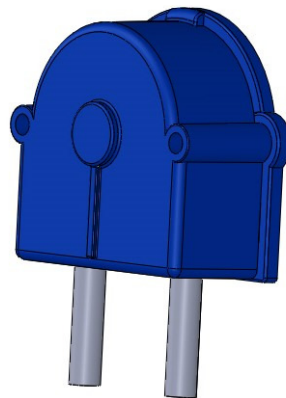
- **NEW TUBE GRIPS RETAINED IN COVER GIVING EASIER FITMENT OF LONG OR CONTINUOUS TUBE.**
- **PUMP BASE PLATE RETAINED WITH SINGLE SCREW ENABLING EASIER DISASSEMBLY & REASSEMBLY.**
- **MULTIPLE ROLLER OPTIONS (2, 3, 4 & 6 ROLLER VARIANTS).**
- **3mm D and 4mm D MOTOR SHAFT OPTIONS.**
- **ENCODER OPTION.**

OLD 200 SERIES PUMP HEAD



REPLACEMENT 200 SERIES PUMP HEAD

(note body material would be translucent as per existing unit)



The new 200 series mounts on the same fixing centres, screws and has the same foot print as the old 200 series. It will fit all of the existing motors, brackets and cases.