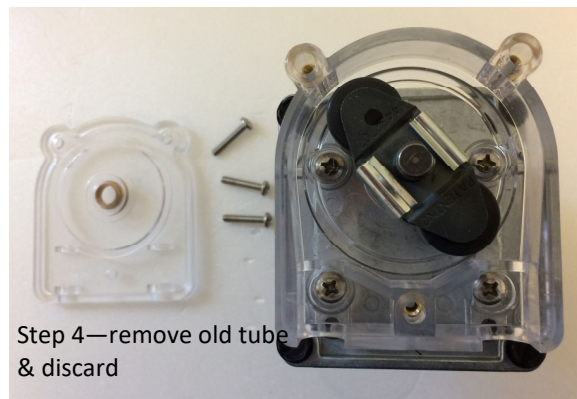
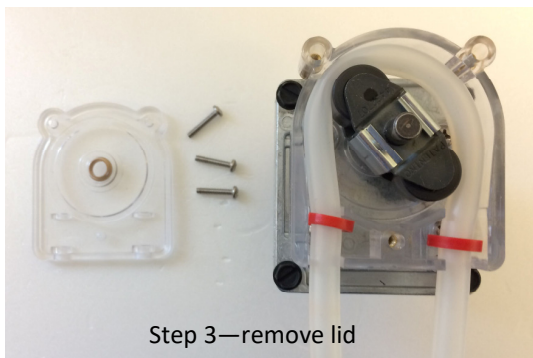
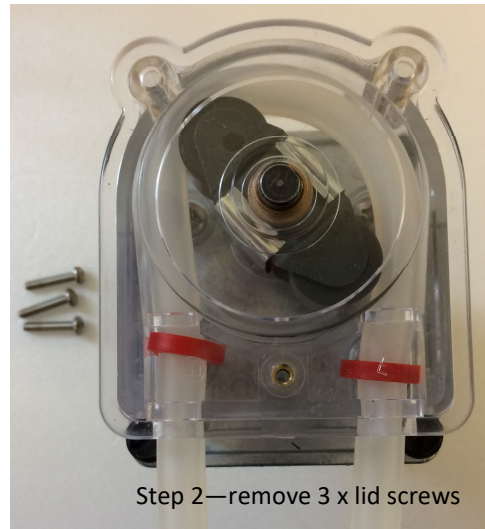
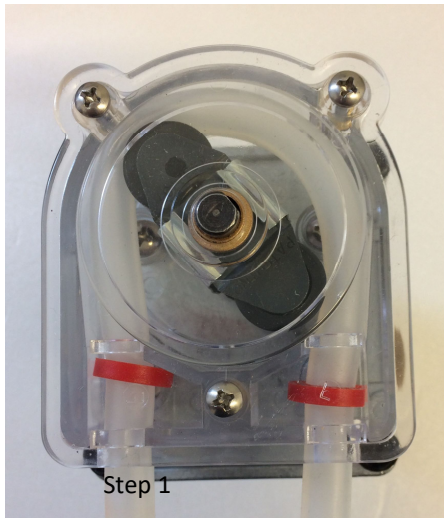
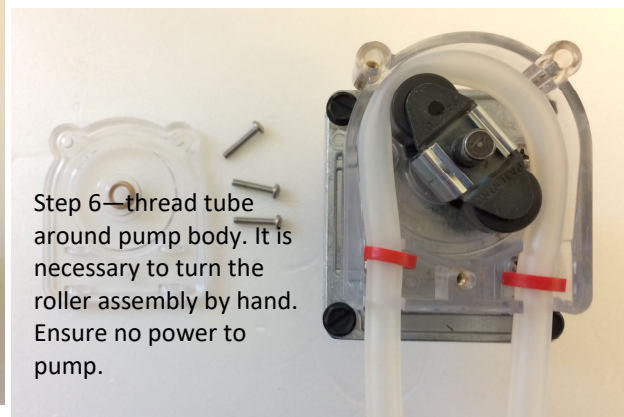
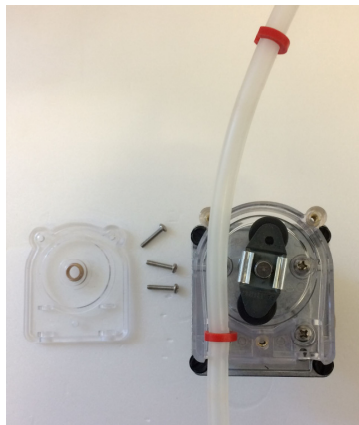


810 series Peristaltic Pump Tube fitting/changing step by step guide

Issue 2 03/03/2017



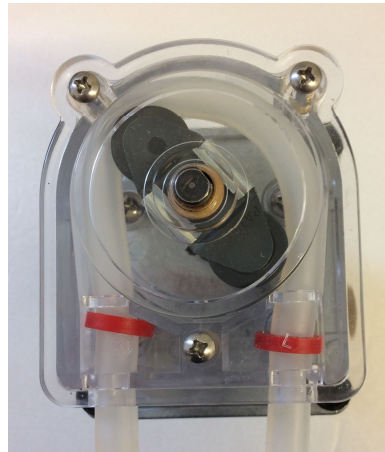
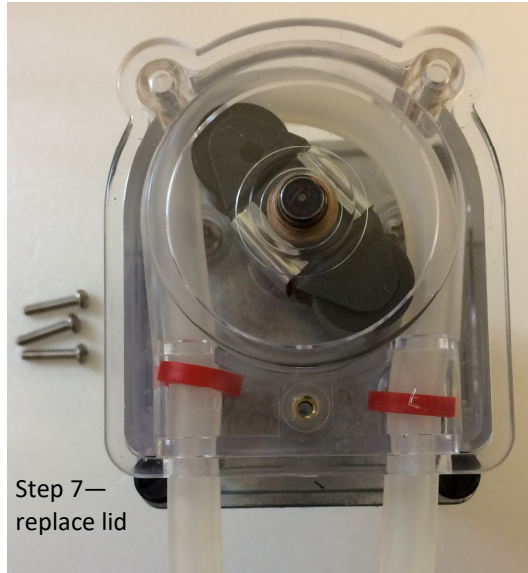
Step 5— Fit new tube. Start at inlet side (normally left). Position the “C” clip in the cavity in the pump body as shown, open area to the outside



Williamson Manufacturing Company Ltd
Tel:- 01273-857752 Email:- sales@wmc pumps.com Web:- www.wmc pumps.com

810 series Peristaltic Pump

Tube fitting/changing step by step guide continued



810 series Peristaltic Pump

Standard tubes:-

SIL-4.8x2.4-230MM—Silicone tubing 4.8mm ID. 2ml per RPM

SIL-6.4x2.4-230MM—Silicone tubing 6.4mm ID. 3.3ml per RPM

SANT55-4.8x2.4-230MM—Santoprene tubing 4.8mm ID. 2ml per RPM

SANT55-6.4x2.4-230MM—Santoprene tubing 6.4mm ID. 3.3ml per RPM

NOR-A60G-6.4x2.4-230MM - Norprene tubing 6.4mm ID. 3ml per RPM

Cable ties must be 130mm apart if two are fitted.



Williamson Manufacturing Company Ltd

Tel:- 01273-857752 Email:- sales@wmc pumps.com Web:- www.wmc pumps.com